

One complete source for your asphalt chain needs



You now have immediate access to your asphalt chain requirements. **Applied Industrial Technologies** and **Jeffrey Chain Corporation** have designed a program to keep you **InSync**® with a stocked selection of the highest quality chain for your asphalt applications.

Manufacturers:

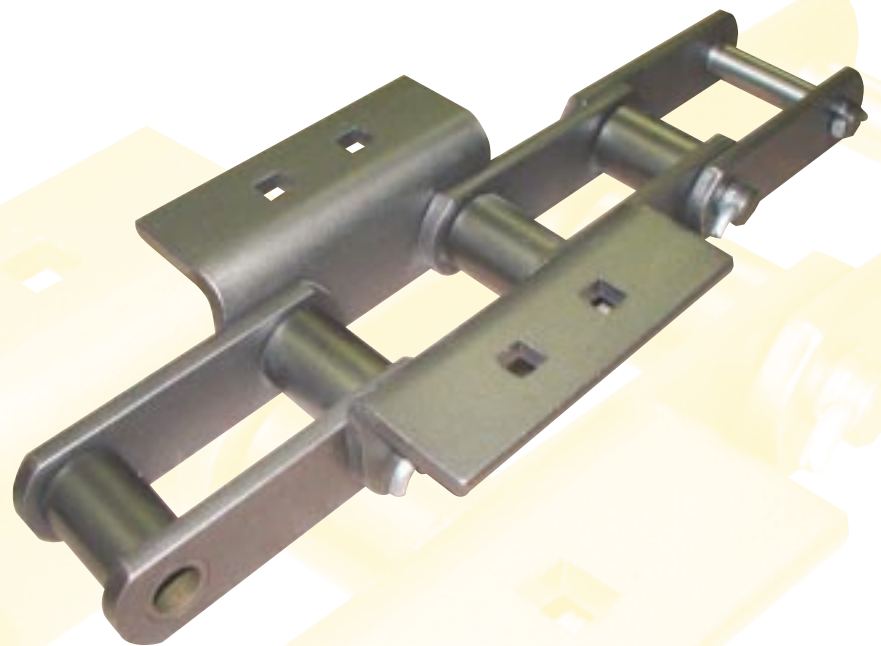
(PARTIAL LISTING)

- **Astec**
- **Bituma-Stor**
- **CMI**
- **Standard Havens/
Cedarapids**

Contact Applied at
1-877-279-2799
with your particular
manufacturer.

► Features and Benefits:

- Complete Interchangeability and Availability**
Eliminate long lead times and purchase asphalt chain from your local Applied service center. There's no longer a need to rely on the original manufacturer or their dealers.
- Large Inventory**
Our vast stock includes chain for the most popular manufacturers of asphalt equipment.

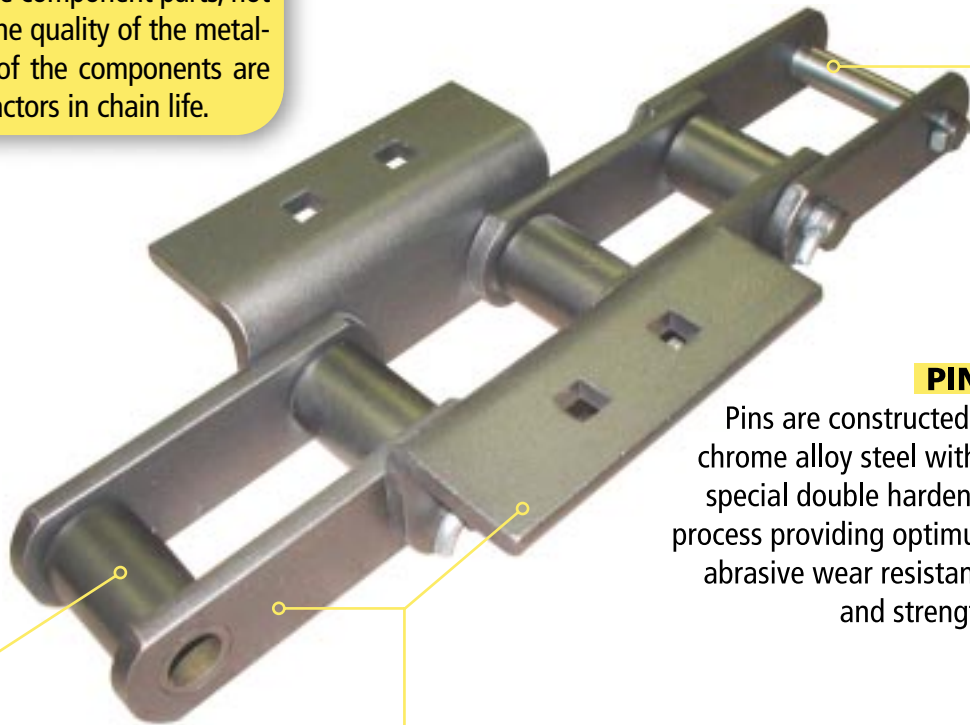


**Jeffrey Chain
is in stock and
ready for
delivery!**



Why Jeffrey Chain?

Many users select chains by the breaking strength of the chain. Most chains actually fail by a wearing of the component parts, not breakage. Therefore, the quality of the metallurgy and tolerances of the components are the controlling factors in chain life.



PINS

Pins are constructed of chrome alloy steel with a special double hardened process providing optimum abrasive wear resistance and strength.

SIDEBARS AND ATTACHMENTS

Sidebars and attachments are constructed of fine-grained steel that are hardened and tempered to maximize strength and fatigue resistance.

ROLLERS AND BUSHINGS

Rollers and bushings are made of chrome/nickel alloy steel and are case hardened up to 63 Rc to resist wear without sacrificing durability.

Contact your local Applied service center to learn more about the Applied and Jeffrey Asphalt Chain Program and other products and services geared specifically toward the Aggregate Industry.

**Contact Your Local Applied Service Center
1-877-279-2799**

WARNING: Injury, death, property damage, and/or equipment failure may result from misuse or misapplication of the products featured in this publication. The information in this publication is provided "AS IS," WITHOUT WARRANTY OF THE INFORMATION'S ACCURACY OR THE PRODUCTS' SUITABILITY FOR ANY PARTICULAR USE.



World Headquarters
One Applied Plaza
Cleveland, Ohio 44115-5000
Toll Free Phone: 1-877-279-2799
www.Applied.com