

# An Alternative Chain for Vacuum Seal Applications



**Gripper Chain™ from U.S. Tsubaki has innovative gripper attachments for form, fill and vacuum seal applications.**

Enjoy lower maintenance costs, less downtime and increased productivity when you start with the best base chain for your application.

- *Ideal for food, beverage and packaging industry applications*
- *Reliable performance*
- *Extended wear life*
- *Competitive price*
- *Quick delivery*

***Applied Industrial Technologies—  
Keeping you InSync® with maximum  
efficiencies and regulatory requirements.***



## FEATURES AND BENEFITS:

- **Exclusive Design – Efficient Maintenance**  
Gripper Chain™ is the only chain of its kind to offer recessed, riveted pins for easy installation and removal.
- **Minimal Start-up Time**  
Factory pre-loading minimizes initial stretch. Food-grade lubricant is pre-applied and FDA-approved. Connecting links are marked for easy identification.
- **Extended Service Life**  
Gripper Chain's™ high-performance spring is designed to last for more than 10 million cycles, even at high speeds.
- **Enhanced Operation**  
Gripper Chain's™ reliable clamping mechanism and swivel design ensure precise positioning and optimal feed-through.
- **Extensive Selection**  
Available in single-strand and in a variety of materials to meet your specific requirements — including corrosion-resistant stainless steel and maintenance-free LAMBDA®.

A product of:

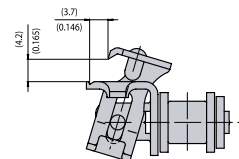
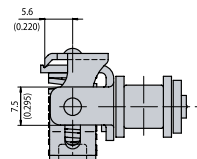
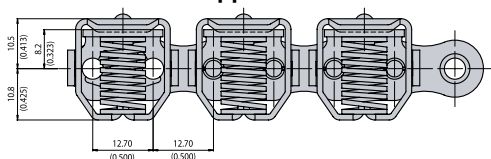


Authorized Distributor:

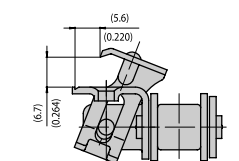
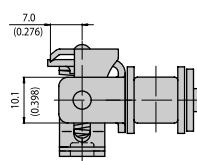
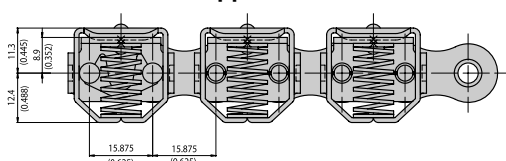


# Gripper Chain™ is Available in a Variety of Styles to Meet Your Specific Requirements

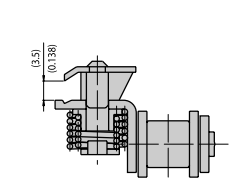
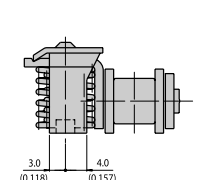
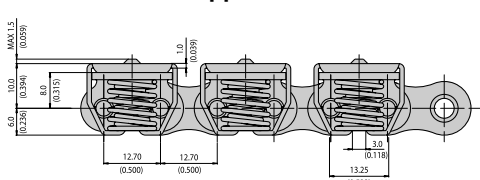
RS08BNPKUTM Gripper Chain™



RS10BNPKUTM Gripper Chain™



RS08BNPKUTS Gripper Chain™

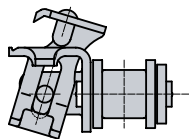


ISO Ref.	Chain No.	Connecting Link	Pitch		Roller Dia.		Inside Width		Clamp Type	Clamping Force N	Materials		
			mm	in.	mm	in.	mm	in.			Base Chain	Clamp	Spring
08B-1	RS08BNPKUTM	RS08BNPKUTMCL	12.7	0.500	8.510	0.335	7.75	0.305	Type K	50	NP	304SS	SA
10B-1	RS10BNPKUTM	RS10BNPKUTMCL	15.8	0.625	10.160	0.400	9.65	0.380	Type K	70	NP	304SS	SA
08B-1	RS08BNPKUTS	RS08BNPKUTSCL	12.7	0.500	8.510	0.335	7.75	0.305	Standard	55	NP	304SS	SA

NP = Nickel-Plated Steel, SS = Stainless Steel, SA = Special Alloy

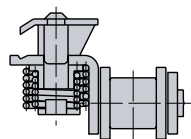
NOTES: Do not twist chain. Use care not to damage attachment when unwinding chain from reel.

## CLAMP TYPES



Type K

Opens vertically, then sideways for easy film engagement



Standard

Opens vertically with a slight side movement

Contact Your Local Applied® Service Center  
**1-877-279-2799**



Corporate Headquarters  
One Applied Plaza  
Cleveland, Ohio 44115  
Toll Free Phone: 1-877-279-2799  
Applied.com

WARNING: Injury, death, property damage, and/or equipment failure may result from misuse or misapplication of the products featured in this publication. The information in this publication is provided "AS IS," WITHOUT WARRANTY OF THE INFORMATION'S ACCURACY OR THE PRODUCTS' SUITABILITY FOR ANY PARTICULAR USE.