



Staying InSync With Technology.

**"APPLIED provides the Food Processing Industry with innovative solutions"**

## QUANTIS® Gearmotors and Reducers

Applied Industrial Technologies is pleased to offer a new line of products from Rockwell Automation to keep you InSync<sup>SM</sup> with the latest in gearmotor and reducer technology. The QUANTIS<sup>®</sup> line of gearmotors and reducers is available in Motorized Shaft-Mount (MSM), In-Line Helical (ILH) and Right Angle Helical-Bevel (RHB). These products are designed for flexibility and high torque capabilities in a compact housing design.

### Food Processing Applications:

- Agitators
- Accumulation conveyors
- Modular plastic belt and chain conveyors
- Blenders and mixers
- Bottle and can rinsers
- Dryers and ovens
- Packaging machinery
- Screw conveyors

### Features/Benefits:

- Design is entirely interchangeable with SEW-Eurodrive products commonly found in food and packaging applications
- Modular assembly and motor/reducer packaged combinations provide flexibility and ensure fast delivery
- One-piece case construction optimizes overhung loads and minimizes joints to remove potential leak paths
- All ground gearing increases efficiency and decreases noise
- Input horsepower capabilities range from 1/4 hp to 75 hp
- Options including integral motors (for limited space), clamp-collar construction or three-piece coupled construction increase flexibility



Value Through Innovation

# Applied and DODGE® QUANTIS® – Your InSync<sup>sm</sup> Modular Gearing Solution

## Right Angle Helical-Bevel Gearmotor and Reducer

The **QUANTIS RHB** gearmotor and reducer is available in eight sizes with three-stage extended ratios up to 300:1. RHB gearmotors and reducers offer two housing configurations: foot mounted and flange or shaft-mounted. Additional mounting flexibility is attainable with four output shaft options; many are available in both inch and metric.



Output torque ranges up to 119,489 lb-in (13,500 Nm)

## Motorized Shaft-Mount Gearmotor and Reducer

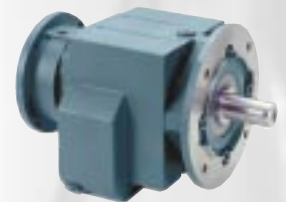
The **QUANTIS MSM** gearmotor and reducer is offered in eight sizes with two-stage extended ratios up to 85:1 and three-stage ranges up to 350:1. MSM gearmotors and reducers feature a universal housing that extends multiple mounting capabilities, including foot-mounted, flange-mounted and shaft-mounted. Additional mounting flexibility may be attained with four output shaft options: solid shaft, straight hollow bore, shrink-disc hollow bore and twin-tapered bushed hollow bore. Several shaft options are available in both inch and metric.



Output torque ranges up to 118,603 lb-in (13,400 Nm)

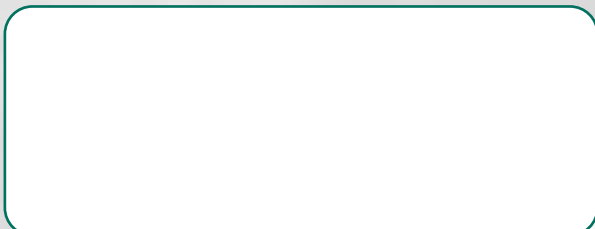
## In-Line Helical Gearmotor and Reducer

The **QUANTIS ILH** gearmotor and reducer is available in eight sizes with two-stage extended ratios up to 50:1 and three-stage ranges up to 359:1. Products in the ILH line are offered in two housing styles or configurations, including foot-mounted or flange-mounted. Both metric and inch output shafts are available.



Output torque ranges up to 123,914 lb-in (14,000 Nm)

Contact Your Local Authorized Service Center



*Value Through Innovation*

One Applied Plaza  
Cleveland, Ohio 44115-5000  
Toll Free Phone: 1-877-279-2799  
<http://www.appliedindustrial.com>