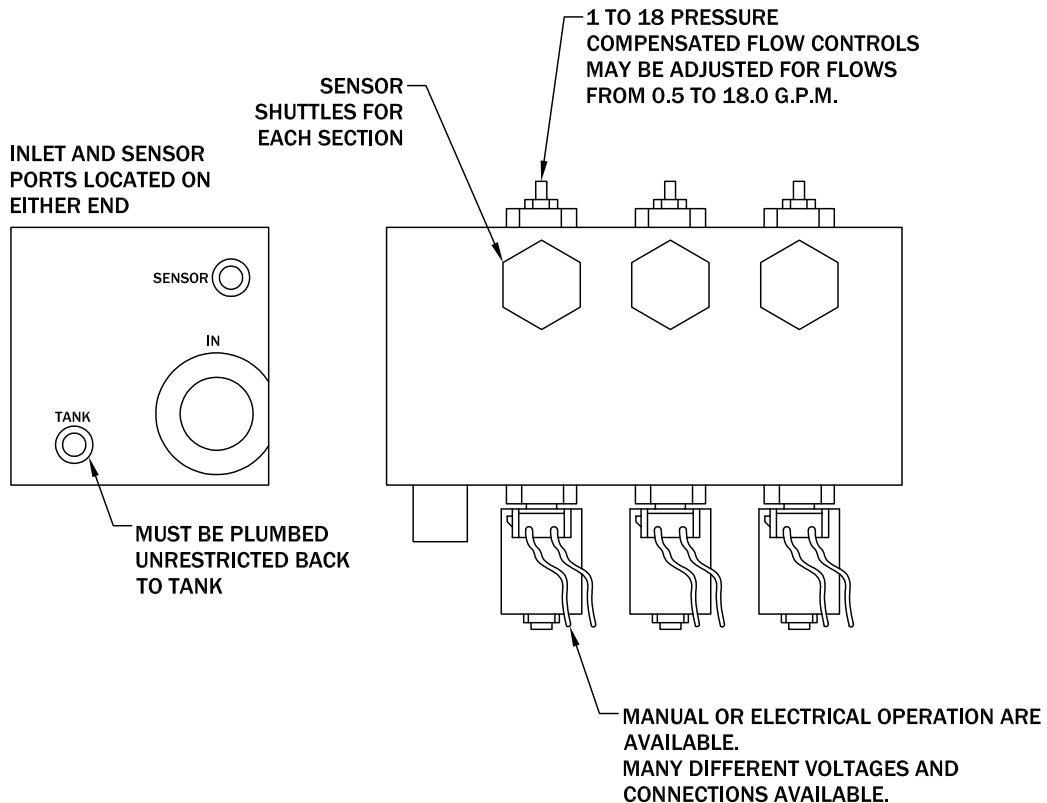


Distribution Manifold

THIS MANIFOLD IS LOAD SENSING. IN THE DE-ENERGIZED POSITION THE PUMP IS ON STAND-BY MODE. ACTUATING A CIRCUIT GIVES THE DESIRED PRESSURE COMPENSATED FLOW.



MODEL CODE

D82 12 - BBB - 16

BASIC VALVE SERIES

NUMBER OF 18 GPM PRESSURE COMPENSATED SECTIONS

NUMBER OF 14 GPM PRESSURE COMPENSATED SECTION
 IF NONE REQUIRED ENTER "0" (ZERO)

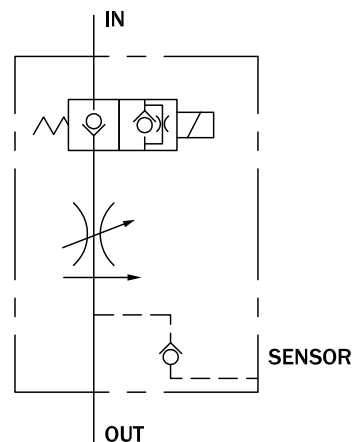
ACTUATION DESIGNATION

- A= MANUAL ON/OFF OPERATION
 - B= 12VDC ON/OFF WITH LEADS
 - C= 24VDC ON/OFF WITH LEADS
 - D= 110VAC ON/OFF WITH CONDUIT
 - E= 110VAC ON/OFF WITH DIN CONNECTOR
 - F= 12VDC ON/OFF WITH DIN CONNECTOR
 - G= 24VDC ON/OFF WITH DIN CONNECTOR
 - H= 36VDC ON/OFF WITH DIN CONNECTOR
- ONE LETTER PER SECTION FROM LEFT TO RIGHT

BASIC VALVE PORTING

-16 INLET, -12 WORK, -4 SENSOR, -6 DRAIN

OTHER OPTIONS AVAILABLE UPON REQUEST



2-Speed Steering Manifold

